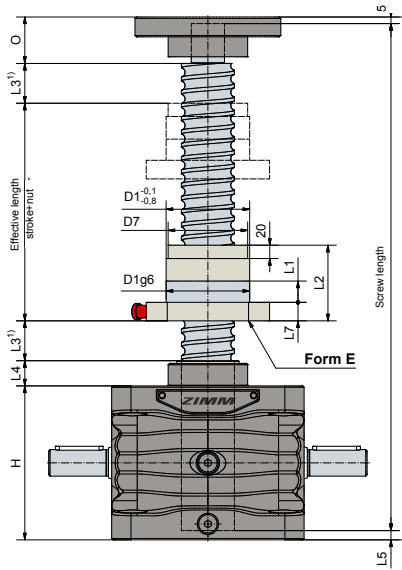
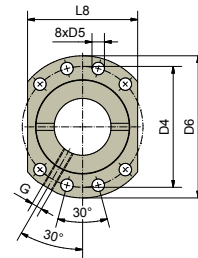
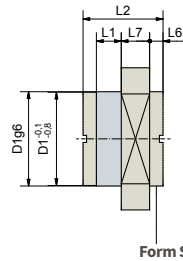


35 to 100 kN
KGT-R | rotating screw



Mounting side flange nut:
G = flange gearbox side (as shown)
S = flange screw side



arrangement of boreholes
2 to DIN 69051

Technical data

ZE-35-R

max. compressive/tensile force, static: 35 kN (3,5 t)
 Input speed: 1500 rpm / max. 1800 rpm
 Gearbox operating temperature: max. 60°C, higher on request
 Moment of inertia: N: 0,97 kg cm² / L: 0,67 kg cm²
 Input torque (at 1500 rpm): max. 19,8 Nm (N) / max. 9 Nm (L)
 Drive-through torque: max. 130 Nm
 Gear ratio: 7:1 (normal) / 28:1 (low-speed)
 Housing material: GGG, corrosion-resistant
 Worm shaft: steel, case-hardened, ground
 Weight (screw jack): 9,5 kg

ZE-100-R

max. compressive/tensile force, static: 100 kN (10 t)
 Input speed: 1500 rpm / max. 1800 rpm
 Gearbox operating temperature: max. 60°C, higher on request
 Moment of inertia: N: 4,66 kg cm² / L: 3,38 kg cm²
 Input torque (at 1500 rpm): max. 53,4 Nm (N) / max. 13,5 Nm (L)
 Drive-through torque: max. 540 Nm
 Gear ratio: 9:1 (normal) / 36:1 (low-speed)
 Housing material: GGG, corrosion-resistant
 Worm shaft: steel, case-hardened, ground
 Weight (screw jack): 29 kg

ZE-50-R

max. compressive/tensile force, static: 50 kN (5 t)
 Input speed: 1500 rpm / max. 1800 rpm
 Gearbox operating temperature: max. 60°C, higher on request
 Moment of inertia: N: 2,49 kg cm² / L: 1,73 kg cm²
 Input torque (at 1500 rpm): max. 31,5 Nm (N) / max. 10,4 Nm (L)
 Drive-through torque: max. 260 Nm
 Gear ratio: 7:1 (normal) / 28:1 (low-speed)
 Housing material: GGG, corrosion-resistant
 Worm shaft: steel, case-hardened, ground
 Weight (screw jack): 17 kg

Ordering example: ZE-35-RN-KGT 40x10, C = 46,1 kN - G

Version: RN or RL (translation)
 KGT Screw
 Dynamic load rating C
 Nut flange: G: flange gearbox sides, S: flange screw side

A holding brake is necessary due to the lack of self-locking: either a brake motor or spring-loaded brake can be used.
Screw: 1.1213 (Cf 53), hardened inductiv and polished.

High performance Series ZE-H
 For high duty cycles or input speed up to 3000 rpm please contact our sales department.

Screw jacks	KGT Screw	Stroke per drive revolution		KGT load rating kN		Nut		Lubrication-hole	Axialplay max ³⁾
		RN	RL	dyn. C ²⁾	stat. C ₀ =C _{0a}	Type	Hole pattern		
ZE-35	40x5	0,71	0,18	27,5	63,3	E	2	M6	0,06
	40x10	1,43	0,36	46,1	71,3	E	2	M8x1	0,06
	40x20	2,86	0,72	44	80,4	E	2	M8x1	0,06
	40x40 ³⁾	5,71	1,43	35	101,9	S	2	M8x1	0,06
ZE-50	40x5	0,71	0,18	27,5	63,6	E	2	M6	0,06
	40x10	1,43	0,36	46,1	71,3	E	2	M8x1	0,06
	40x20	2,86	0,72	44	80,4	E	2	M8x1	0,06
	40x40 ³⁾	5,71	1,43	35	101,9	S	2	M8x1	0,06
ZE-100	50x10	1,11	0,28	122,4	248,6	E	2	M8x1	0,06
	50x20	2,22	0,56	114,9	237,6	S	N ⁴⁾	M8x1	0,06
	50x40	4,44	1,11	84,71	165	E	2	M8x1	0,03
	50x50 ³⁾	5,56	1,39	108,5	269,6	E	2	M8x1	0,03

Screw jacks	KGT Screw	Dimensions mm															
		d	dk	d3j6	O	H	D1	D4	D5	D6	L1	L2	L3 ³⁾	L4	L5	L6	L7
ZE-35	40x5	39	36,4	25	30	100	63	78	9	93	10	57	15	19	7	14	70
	40x10	39	33,3	25	30	100	63	78	9	93	16	71	15	19	7	14	70
	40x20	39	34,3	25	30	100	63	78	9	93	16	80	30	19	7	14	70
	40x40 ³⁾	39	36,4	25	30	100	63	78	9	93	16	85	60	19	7	7,5	14
ZE-50	40x5	39	36,4	25	30	116	63	78	9	93	10	57	15	19	7	14	70
	40x10	39	33,3	25	30	116	63	78	9	93	16	71	15	19	7	14	70
	40x20	39	34,3	25	30	116	63	78	9	93	16	80	30	19	7	14	70
	40x40 ³⁾	39	36,4	25	30	116	63	78	9	93	16	85	60	19	7	7,5	14
ZE-100	50x10	49	43,3	40	45	160	75	93	11	110	16	107	20	30	8	16	85
	50x20	49	43,3	40	45	160	85 ¹⁾	103 ¹⁾	11	120 ¹⁾	16	125	40	30	8	16	95
	50x40	50	41,1	40	45	160	85 ¹⁾	103 ¹⁾	11	120 ¹⁾	16	125	80	30	8	16	95
	50x50 ³⁾	50	41,1	40	45	160	85 ¹⁾	103 ¹⁾	11	120 ¹⁾	16	145	100	30	8	16	95

An increased screw can also be used for the rotating version. (such as: ZE-35-RN with screw 50x20)
 1) An extension may be required if a bellows or spiral spring is fitted
 2) Dynamic load rating to DIN 69051 part 4 draft 1989
 3) Round flange
 4) arrangement of boreholes on request
 5) Non-preferred design
 6) Reduced play 0,02 mm available on request
 7) Not to DIN 69051