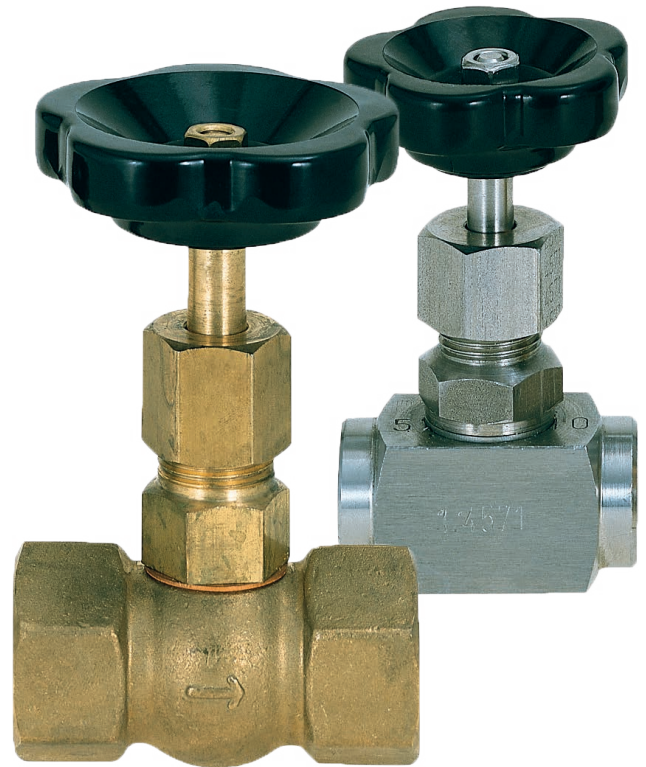


Needle Valve

NV



OVERVIEW

Operating principle

- Needle valve

Application

- Flow-adjustment of liquids and gases

Features

- Universal orientation
- Suitable for high temperature
- High pressure resistance
- Threaded connections, special threads on request

Installation information

- The installation of the needle valve can be done in any way in the system. The flow direction must be observed.
- The needle valve must not be used as a supporting part in a pipe construction!
- The medium must not contain any solid particles!
We recommend the installation of strainer type SFD or SFM.
- **Download: www.meister-flow.com**

OPERATING DATA

Brass version:

| | |
|---------------------------------|--|
| Operating pressure, max. | 100 bar ⁽¹⁾ |
| Pressure reduction | at 50 °C: 6 % |
| | at 100 °C: 15% |
| Temperature, max. | 100 °C |
| Connection | Withworth pipe thread according to DIN 259, socket both sides (other on request) |

Stainless steel version:

| | |
|---------------------------------|--|
| Operating pressure, max. | 200 bar ⁽¹⁾ |
| Pressure reduction | at 50 °C: 6 % |
| | at 100 °C: 15 % |
| | at 200 °C: 37 % |
| | at 300 °C: 60 % |
| Temperature, max. | at 400 °C: 84 % |
| | 250 °C ⁽²⁾ |
| Connection | Withworth pipe thread according to DIN 259, socket both sides (other on request) |

⁽¹⁾ at 50 °C and higher, observe pressure reduction

⁽²⁾ 350 °C with graphite spindle seal

MATERIALS

Brass version

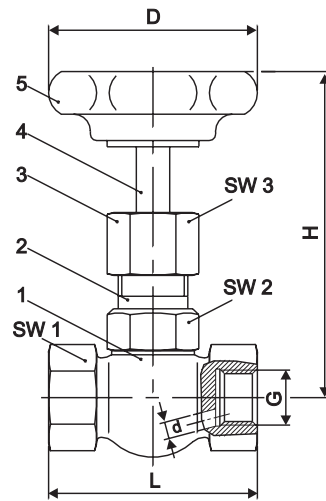
| | |
|---------------|--------------------|
| Body: | Cu Zn 39 Pb 3 F 37 |
| Head piece: | Brass |
| Gland nut: | Brass |
| Spindle: | Brass |
| Handwheel: | Plastic |
| Spindle seal: | |
| 1/8" - 1/2" | NBR |
| 3/4" - 2" | Teflon® |

Stainless steel version

| | |
|---------------|----------------------------|
| Body: | 1.4571 |
| Head piece: | 1.4571 |
| Gland nut: | 1.4571 |
| Spindle: | 1.4571 |
| Handwheel: | Plastic |
| Spindle seal: | Teflon®, optional Graphite |

BRASS VERSION

TECHNICAL DRAWING



SUMMARY OF TYPES

| Type | Overall dimensions [mm] | | | | | | | | |
|-------------|-------------------------|----|------|------|------|-----|-----|-----|-------------------------|
| | G | D | SW 1 | SW 2 | SW 3 | L | H | d | kv-value ⁽³⁾ |
| NV [1/8"] | 1/8" | 50 | 22 | 19 | 19 | 50 | 70 | 4 | 4 |
| NV [1/4"] | 1/4" | 50 | 22 | 19 | 19 | 50 | 78 | 5 | 8 |
| NV [3/8"] | 3/8" | 50 | 22 | 19 | 19 | 50 | 78 | 6 | 10 |
| NV [1/2"] | 1/2" | 63 | 25 | 19 | 19 | 55 | 78 | 6,5 | 11 |
| NV [3/4"] | 3/4" | 63 | 32 | 22 | 22 | 67 | 90 | 9 | 18 |
| NV [1"] | 1" | 63 | 40 | 22 | 22 | 75 | 95 | 11 | - |
| NV [1 1/4"] | 1 1/4" | 90 | 54 | 24 | 27 | 110 | 105 | 13 | - |
| NV [1 1/2"] | 1 1/2" | 90 | 58 | 24 | 27 | 110 | 110 | 15 | - |
| NV [2"] | 2" | 90 | 70 | 27 | 27 | 110 | 110 | 15 | - |

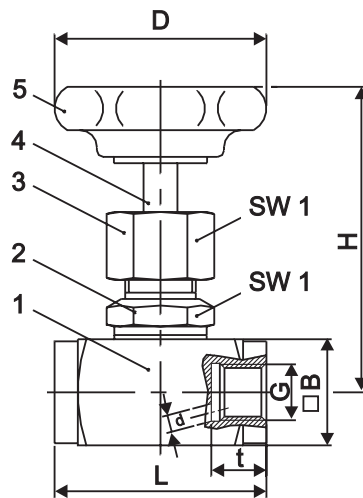
⁽³⁾ in l/min, at 1 bar differential pressure and max. opening

PARTS DESCRIPTION

| Item | Description | Item | Description |
|------|-------------|-----------------|--------------|
| 1 | Body | 4 | Spindle |
| 2 | Head piece | 5 | Handwheel |
| 3 | Gland nut | not illustrated | Spindle seal |

■ STAINLESS STEEL VERSION

■ TECHNICAL DRAWING



■ SUMMARY OF TYPES

| Type | Overall dimensions [mm] | | | | | | | | |
|-------------|-------------------------|-----|------|-----|-----|----|----|----|-------------------------|
| | G | D | SW 1 | L | H | t | B | d | kv-value ⁽⁴⁾ |
| NV [1/8"] | 1/8" | 50 | 22 | 45 | 70 | 11 | 25 | 4 | 4 |
| NV [1/4"] | 1/4" | 50 | 22 | 50 | 72 | 13 | 25 | 5 | 8 |
| NV [3/8"] | 3/8" | 50 | 22 | 55 | 72 | 13 | 25 | 6 | 10 |
| NV [1/2"] | 1/2" | 63 | 22 | 60 | 72 | 16 | 30 | 7 | 12 |
| NV [3/4"] | 3/4" | 63 | 27 | 75 | 95 | 18 | 35 | 9 | 18 |
| NV [1"] | 1" | 90 | 32 | 100 | 110 | 22 | 45 | 12 | 32 |
| NV [1 1/4"] | 1 1/4" | 100 | 41 | 110 | 130 | 24 | 60 | 15 | 60 |
| NV [1 1/2"] | 1 1/2" | 100 | 41 | 130 | 140 | 28 | 70 | 22 | 115 |
| NV [2"] | 2" | 100 | 41 | 130 | 140 | 28 | 70 | 22 | 130 |

⁽⁴⁾ in l/min, at 1 bar differential pressure and max. opening

■ PARTS DESCRIPTION

| Item | Description | Item | Description |
|------|-------------|-----------------|--------------|
| 1 | Body | 4 | Spindle |
| 2 | Head piece | 5 | Handwheel |
| 3 | Gland nut | not illustrated | Spindle seal |