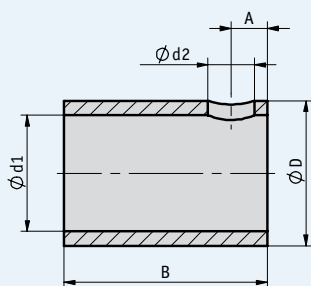
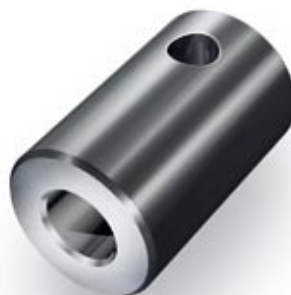


Profile

- Easy and fast mounting
- Steel browned or stainless steel



Type	A*	B*	$\varnothing d_2$ *	$\varnothing d_1$ H7	$\varnothing d_2$ *
RH01	3.75	20	20	max. 18	5.5
RH02	4.0	30	30	max. 28	5.5
RH03	4.5	30	25	max. 22	5.5
RH04	2.8	17	14	max. 12	4.2
RH07	2.5	14	10	max. 8	3.2
RH08	3.0	20	14	max. 12	5.2
RH09	3.0	20	20	max. 18	2x3.6 (120°)

* Details in mm

Mechanical data

1.5

Type	RH01	RH02	RH03	RH04	RH07	RH08	RH09
Suitable for use with display	DA05/1 DA08 DA09S	DA10* DA10R/1* DE10	DA10** DA10R/1**	DA04 DE04	DA02 DK05	DK01 DK02 DK03	AP04
$\varnothing d_1$ H7 steel browned	8, 10, 12, 14, 15, 16, 18	10, 12, 14, 16, 18, 20, 22, 24, 25, 26, 28	18, 20, 22	4, 5, 6, 8, 9, 10, 12	6, 8	6, 8, 10, 12	
$\varnothing d_1$ H7 stainless steel	VA8, VA9.525, VA10, VA12, VA12.7, VA14, VA15, VA15.875, VA16	VA12.7, VA20, VA24, VA25, VA25.4		VA8, VA9.525, VA10, VA12	VA8		VA8, VA9.525, VA10, VA12, VA12.7, VA14, VA15, VA15.875, VA16

*) only with hollow shaft WK, **) only with hollow shaft WL

Note: Characters highlighted in orange are order features.

Order

Order table

Feature	Order text	Specification	Additional information
Version	...	A RH01, RH02, RH03, RH04, RH07, RH08, RH09	
Internal diameter d_1 H7	...	B see table above	

Order code



Scope of delivery: Reducing bush, headless screw